

Test Report

Report No.: CTT2409031464EN

Page 1 of 6

Applicant: Yiwu jipu E-commerce Co., Ltd

Address: Room 301 No.54 North zhenzhong road, Dacheng town, Yiwu city, Zhejiang province

Sample Received Date: Sep. 14, 2024

Completed Date: Sep. 14, 2024

Report Date: Sep. 14, 2024

The following merchandise was (were) submitted and identified on behalf of the applicant as:

Sample Name: Ceramic Earring, Metal Beads

Test Result(s): Please refer to next page(s).

Test Requested and Conclusion(s): Please refer to next page(s).

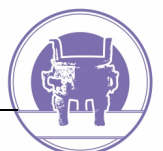
Signed for and on Behalf of CTT:



Frank
Technical Manager



Verification Report



Test Report

Report No.:CTT2409031464EN

Page 2 of 6

Test Requested and Conclusion(s):

No.	Standard and Requirement	Conclusion(s)
1	Annex XVII items 63 of the REACH Regulation (EC) No. 1907/2006 and its amendment - Lead	PASS
2	Annex XVII items 23 of the REACH Regulation (EC) No. 1907/2006 and its amendment - Cadmium	PASS
3	ASTM F2999-19 Standard Consumer Safety Specification for Adult Jewelry - Lead	PASS
4	ASTM F2999-19 Standard Consumer Safety Specification for Adult Jewelry - Cadmium	PASS

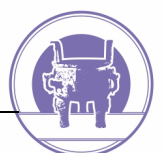
Test Result(s):

Lead - Annex XVII items 63 of the REACH Regulation (EC) No. 1907/2006 and its amendment

Method: CPSC-CH-E1001-08.3, analyzed by Atomic Absorption Spectrometer (AAS) or Inductively Coupled Plasma Optical Emission Spectrometer (ICP-OES) .

Substances	Pb	Conclusion
CAS No.	7439-92-1	
LOQ (mg/kg)	10	
Limit (mg/kg)	500	
Material No.	Result (mg/kg)	
2	20	PASS

- NOTE:**
1. mg/kg = milligram per kilogram (ppm).
 2. N.D. = Not Detected (Less than LOQ, LOQ = Limit of Quantitation).



Test Report

Report No.: CTT2409031464EN

Page 3 of 6

Test Result(s):

Lead - Annex XVII items 63 of the REACH Regulation (EC) No. 1907/2006 and its amendment

Method: CPSC-CH-E1002-08.3, analyzed by Atomic Absorption Spectrometer (AAS) or Inductively Coupled Plasma Optical Emission Spectrometer (ICP-OES) .

Substances	Pb	Conclusion
CAS No.	7439-92-1	
LOQ (mg/kg)	10	
Limit (mg/kg)	500	
Material No.	Result (mg/kg)	
1	N.D.	PASS

- NOTE:**
1. mg/kg = milligram per kilogram (ppm).
 2. N.D. = Not Detected (Less than LOQ, LOQ = Limit of Quantitation).

Test Result(s):

Cadmium - Annex XVII items 23 of the REACH Regulation (EC) No. 1907/2006 and its amendment

Method: CPSC-CH-E1001-08.3ⁿ, analyzed by Atomic Absorption Spectrometer (AAS) or Inductively Coupled Plasma Optical Emission Spectrometer (ICP-OES) .

Substances	Cd	Conclusion
CAS No.	7440-43-9	
LOQ (mg/kg)	2	
Limit (mg/kg)	100	
Material No.	Result (mg/kg)	
2	2	PASS

- NOTE:**
1. mg/kg = milligram per kilogram (ppm).
 2. N.D. = Not Detected (Less than LOQ, LOQ = Limit of Quantitation).

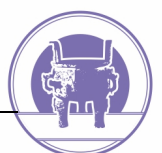
Test Result(s):

Cadmium - Annex XVII items 23 of the REACH Regulation (EC) No. 1907/2006 and its amendment

Method: CPSC-CH-E1002-08.3ⁿ, analyzed by Atomic Absorption Spectrometer (AAS) or Inductively Coupled Plasma Optical Emission Spectrometer (ICP-OES) .

Substances	Cd	Conclusion
CAS No.	7440-43-9	
LOQ (mg/kg)	2	
Limit (mg/kg)	100	
Material No.	Result (mg/kg)	
1	N.D.	PASS

- NOTE:**
1. mg/kg = milligram per kilogram (ppm).



Test Report

Report No.:CTT2409031464EN

Page 4 of 6

2. N.D. = Not Detected (Less than LOQ, LOQ = Limit of Quantitation).

Test Result(s):

Lead - ASTM F2999-19 Standard Consumer Safety Specification for Adult Jewelry

Substances	Pb	Conclusion
CAS No.	7439-92-1	
LOQ (mg/kg)	10	
Limit (mg/kg)	60000	
Material No.	Result (mg/kg)	
2D	20	PASS

- NOTE:**
1. mg/kg = milligram per kilogram (ppm).
 2. N.D. = Not Detected (Less than LOQ, LOQ = Limit of Quantitation).
 3. "D" = The sample(s) is(are) tested according to the method CPSC-CH-E1001-08.3.

Test Result(s):

Lead - ASTM F2999-19 Standard Consumer Safety Specification for Adult Jewelry

Substances	Pb	Conclusion
CAS No.	7439-92-1	
LOQ (mg/kg)	10	
Limit (mg/kg)	200	
Material No.	Result (mg/kg)	
1D	N.D.	PASS

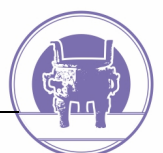
- NOTE:**
1. mg/kg = milligram per kilogram (ppm).
 2. N.D. = Not Detected (Less than LOQ, LOQ = Limit of Quantitation).
 3. "D" = The sample(s) is(are) tested according to the method CPSC-CH-E1002-08.3.

Test Result(s):

Cadmium - ASTM F2999-19 Standard Consumer Safety Specification for Adult Jewelry

Substances	Cd	Conclusion
CAS No.	7440-43-9	
LOQ (mg/kg)	2	
Limit (mg/kg)	15000	
Material No.	Result (mg/kg)	
2D	2	PASS

- NOTE:**
1. mg/kg = milligram per kilogram (ppm).
 2. N.D. = Not Detected (Less than LOQ, LOQ = Limit of Quantitation).
 3. "D" = The sample(s) is(are) tested according to the method CPSC-CH-E1001-08.3.



Test Report

Report No.: CTT2409031464EN

Page 5 of 6

Test Result(s):

Cadmium - ASTM F2999-19 Standard Consumer Safety Specification for Adult Jewelry

Substances	Cd	Conclusion
CAS No.	7440-43-9	
LOQ (mg/kg)	2	
Limit (mg/kg)	15000	
Material No.	Result (mg/kg)	
1D	N.D.	PASS

- NOTE:**
1. mg/kg = milligram per kilogram (ppm).
 2. N.D. = Not Detected (Less than LOQ, LOQ = Limit of Quantitation).
 3. "D" = The sample(s) is(are) tested according to the method CPSC-CH-E1002-08.3.

Test Material List

Material No.	Sample Description	Location
1	Pink plastic	Heart ear stud
2	Ancient copper plating metal	Bead

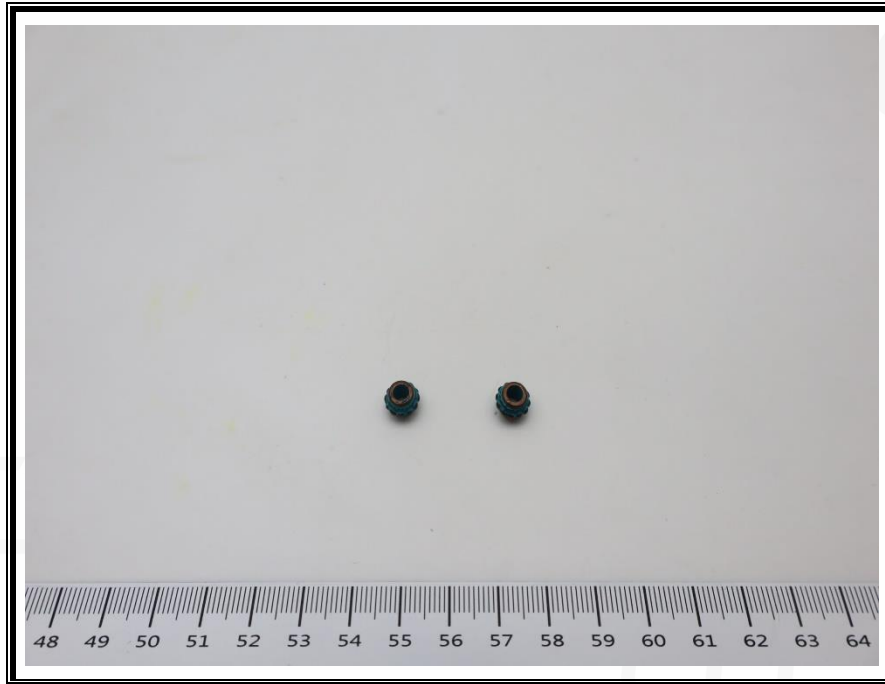
Photo of Sample:



Test Report

Report No.:CTT2409031464EN

Page 6 of 6



End of Report

This test report is issued by the company subject to its General Conditions of Services and accessible at <http://www.cttlab.com/order/202103190908290166.pdf>. The sample and sample information are provided by the applicant, our company are not responsible for their integrity and authenticity. Unless otherwise stated the results shown in this report only apply to the sample as received. Any inquiry about this report, please raise from the date of receipt of the report within 30 days, overdue will not be accept. Without prior written permission of the company, this test report cannot be reproduced, except in full. Items marked with "n" means they are not accredited by CNAS (if with CNAS logo), "s" means the item of subcontractor. This report is only used for scientific research, teaching, internal quality control, not for domestic social impartiality proof data.

