

Test Report

Report No.: CTT2407033431EN

Page 1 of 5

Applicant: Yiwu jipu E-commerce Co., Ltd

Address: Room 301 No.54 North zhenzhong road, Dacheng town, Yiwu city, Zhejiang province

Sample Received Date: Jul. 23, 2024

Completed Date: Aug. 01, 2024

Report Date: Aug. 01, 2024

The following merchandise was (were) submitted and identified on behalf of the applicant as:

Sample Name: CHAIN

Test Result(s): Please refer to next page(s).

Test Requested and Conclusion(s): Please refer to next page(s).

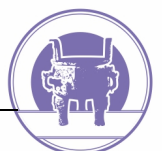
Signed for and on Behalf of CTT:



Frank
Technical Manager



Verification Report



Test Report

Report No.:CTT2407033431EN

Page 2 of 5

Test Requested and Conclusion(s):

No.	Standard and Requirement	Conclusion(s)
1	Annex XVII items 27 of the REACH Regulation (EC) No 1907/2006 & amended (EC) No. 552/2009 - Nickel Release	PASS
2	Annex XVII items 63 of the REACH Regulation (EC) No. 1907/2006 and its amendment - Lead	PASS
3	Annex XVII items 23 of the REACH Regulation (EC) No. 1907/2006 and its amendment - Cadmium	PASS
4	ASTM F2999-19 Standard Consumer Safety Specification for Adult Jewelry - Nickel Release	DATA
5	ASTM F2999-19 Standard Consumer Safety Specification for Adult Jewelry - Lead	PASS
6	ASTM F2999-19 Standard Consumer Safety Specification for Adult Jewelry - Cadmium	PASS

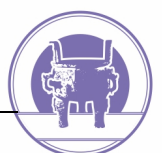
Test Result(s):

Nickel Release - Annex XVII items 27 of the REACH Regulation (EC) No 1907/2006 & amended (EC) No. 552/2009
Method: EN 1811:2023 & EN 12472:2020, analyzed by Atomic Absorption Spectrometer (AAS) or Inductively Coupled Plasma Optical Emission Spectrometer (ICP-OES) .

Material No.	LOQ ($\mu\text{g}\cdot\text{cm}^{-2}\cdot\text{week}^{-1}$)	Limit ($\mu\text{g}\cdot\text{cm}^{-2}\cdot\text{week}^{-1}$)	Sample (s)	Surface Area (cm^2)	Volume of test solution (mL)	Result ($\mu\text{g}\cdot\text{cm}^{-2}\cdot\text{week}^{-1}$)	Conclusion
1	0.05	0.88	1	2.80	3	N.D.	PASS
	0.05	0.88	2	2.80	3	N.D.	
	0.05	0.88	3	2.80	3	N.D.	

NOTE:

1. $\mu\text{g}\cdot\text{cm}^{-2}\cdot\text{week}^{-1}$ = microgram per square centimeter per week.
2. N.D. = Not Detected (Less than LOQ, LOQ = Limit of Quantitation).
3. Products intended to come into direct and prolonged contact with the skin, Articles with a migration limit of $0.5\mu\text{g}\cdot\text{cm}^{-2}\cdot\text{week}^{-1}$:
 - a) An article will be deemed to be non-compliant when the nickel release value is greater than $0.88\mu\text{g}\cdot\text{cm}^{-2}\cdot\text{week}^{-1}$.



Test Report

Report No.: CTT2407033431EN

Page 3 of 5

- b) An article will be deemed to be compliant when the nickel release value is less than or equal to $0.88\mu\text{g}\cdot\text{cm}^{-2}\cdot\text{week}^{-1}$.
4. All post assemblies which are inserted into pierced ears and other pierced parts of the human body, Articles with the migration limit of $0.2\mu\text{g}\cdot\text{cm}^{-2}\cdot\text{week}^{-1}$:
- a) An article will be deemed to be non-compliant when the nickel release value is greater than or equal to $0.35\mu\text{g}\cdot\text{cm}^{-2}\cdot\text{week}^{-1}$.
- b) An article will be deemed to be compliant when the nickel release value is less than $0.35\mu\text{g}\cdot\text{cm}^{-2}\cdot\text{week}^{-1}$.

Test Result(s):

Lead - Annex XVII items 63 of the REACH Regulation (EC) No. 1907/2006 and its amendment

Method: CPSC-CH-E1001-08.3, analyzed by Atomic Absorption Spectrometer (AAS) or Inductively Coupled Plasma Optical Emission Spectrometer (ICP-OES).

Substances	Pb	Conclusion
CAS No.	7439-92-1	
LOQ (mg/kg)	10	
Limit (mg/kg)	500	
Material No.	Result (mg/kg)	
1	13	PASS

- NOTE:**
1. mg/kg = milligram per kilogram (ppm).
 2. N.D. = Not Detected (Less than LOQ, LOQ = Limit of Quantitation).

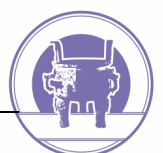
Test Result(s):

Cadmium - Annex XVII items 23 of the REACH Regulation (EC) No. 1907/2006 and its amendment

Method: CPSC-CH-E1001-08.3ⁿ, analyzed by Atomic Absorption Spectrometer (AAS) or Inductively Coupled Plasma Optical Emission Spectrometer (ICP-OES).

Substances	Cd	Conclusion
CAS No.	7440-43-9	
LOQ (mg/kg)	2	
Limit (mg/kg)	100	
Material No.	Result (mg/kg)	
1	N.D.	PASS

- NOTE:**
1. mg/kg = milligram per kilogram (ppm).
 2. N.D. = Not Detected (Less than LOQ, LOQ = Limit of Quantitation).



Test Report

Report No.:CTT2407033431EN

Page 4 of 5

Test Result(s):

Nickel Release - ASTM F2999-19 Standard Consumer Safety Specification for Adult Jewelry

Material No.	LOQ ($\mu\text{g}\cdot\text{cm}^{-2}\cdot\text{week}^{-1}$)	Sample (s)	Surface Area (cm^2)	Volume of test solution (mL)	Result ($\mu\text{g}\cdot\text{cm}^{-2}\cdot\text{week}^{-1}$)
1D	0.05	1	2.80	3	N.D.
	0.05	2	2.80	3	N.D.
	0.05	3	2.80	3	N.D.

- NOTE:**
- $1. \mu\text{g}\cdot\text{cm}^{-2}\cdot\text{week}^{-1}$ = microgram per square centimeter per week.
 - N.D. = Not Detected (Less than LOQ, LOQ = Limit of Quantitation).
 - This testing have no limit requirement.
 - "D" = The sample(s) is(are) tested according to the method EN 1811:2023 & EN 12472:2020.

Test Result(s):

Lead - ASTM F2999-19 Standard Consumer Safety Specification for Adult Jewelry

Substances	Pb	Conclusion
CAS No.	7439-92-1	
LOQ (mg/kg)	10	
Limit (mg/kg)	60000	
Material No.	Result (mg/kg)	
1D	13	PASS

- NOTE:**
- mg/kg = milligram per kilogram (ppm).
 - N.D. = Not Detected (Less than LOQ, LOQ = Limit of Quantitation).
 - "D" = The sample(s) is(are) tested according to the method CPSC-CH-E1001-08.3.

Test Result(s):

Cadmium - ASTM F2999-19 Standard Consumer Safety Specification for Adult Jewelry

Substances	Cd	Conclusion
CAS No.	7440-43-9	
LOQ (mg/kg)	2	
Limit (mg/kg)	15000	
Material No.	Result (mg/kg)	
1D	N.D.	PASS

- NOTE:**
- mg/kg = milligram per kilogram (ppm).



Test Report

Report No.:CTT2407033431EN

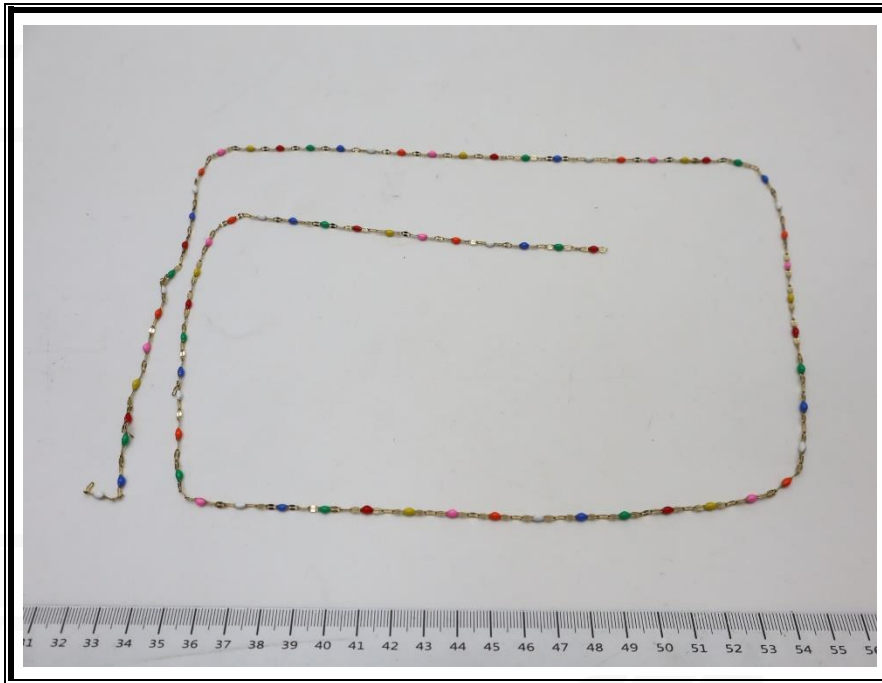
Page 5 of 5

- 2. N.D. = Not Detected (Less than LOQ, LOQ = Limit of Quantitation).
- 3. "D" = The sample(s) is(are) tested according to the method CPSC-CH-E1001-08.3.

Test Material List

Material No.	Sample Description	Location
1	Golden plating metal	Main chain

Photo of Sample:



End of Report

This test report is issued by the company subject to its General Conditions of Services and accessible at <http://www.cttlab.com/order/202103190908290166.pdf>. The sample is provided by the applicant, our company is not responsible for the integrity, authenticity and identification information of the sample. Unless otherwise stated the results shown in this report only apply to the sample as received. Any inquiry about this report, please raise from the date of receipt of the report within 30 days, overdue will not be accept. Without prior written permission of the company, this test report cannot be reproduced, except in full. Items marked with "n" means they are not accredited by CNAS (if with CNAS logo), "s" means the item of subcontractor. This report is only used for scientific research, teaching, internal quality control, not for domestic social impartiality proof data.

